



Complete Machining Solutions



Delivering Value to the Modern Machine Customer



Your Precision Partner



Your Precision Partner

John R. Bromiley Company, Inc.
105 S. Bristol Road • Chalfont, Pennsylvania 18914 • Telephone (215) 822-7723 • Fax (215) 822-8907



By committing to pioneering technology early, we continually position ourselves to deliver value to customers in need of long-term competitive advantage. ■ Yet, as we continue the integration of advanced machine technology, we remind ourselves that satisfied, thriving customers are **our most competitive weapon.**

Your Complete Machining Resource

From Underground to outer space, the John R. Bromiley Company builds key components for industries that include instrumentation, hydraulics, electric power, telecommunications, medical and aerospace — adding to its diverse experience with every job.

We are a regional leader in advanced CNC production machining. From raw materials to final finishing we deliver complete machining solutions. Behind these solutions you will find one guiding mission: To machine parts as if the quality of our customer's product relied on the integrity of our components alone. More than 50 value-driven people dedicate themselves to this principle everyday.

And to back up this skilled workforce of machinists, technicians foremen and inspectors, we have the most advanced machine technology available. State-of-the-art CNC production machinery, including multi-axis milling, multi-axis turning and swiss-style turning centers equips the John R. Bromiley Co. to provide greater precision more efficiently.

Simply put, we build smart solutions. We are a full-service job shop delivering production lots on a contract basis or blanket orders with J.I.T. deliveries. The Bromiley team consistently delivers high-caliber work, on-spec and on time, carefully building its solid reputation one job at a time. If you have a machining problem, we have an answer.



details count.

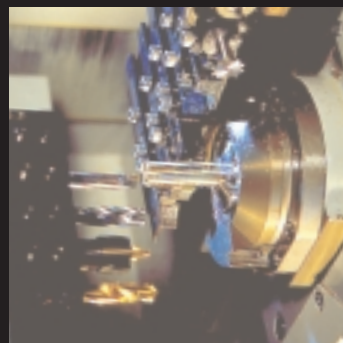
Experience at Work



“Many companies shy away from technology until its proven. But that’s usually too late. We feel that competitive advantage can only be gained by in-depth industry knowledge that permits smart investment in advanced machining systems.

This commitment assures our customers that we will always deliver superior strategic solutions.”

John R. Bromiley
President & CEO
John R. Bromiley Co., Inc.



John R. Bromiley Company’s depth of experience in CNC turning and CNC milling combined with our cost-efficient production capacity is often what attracts new customers. But understanding your business requirements and market demands is



We perform in-house calibrations. This is a huge advantage when it comes to ensuring day-to-day reliability. Our Quality Control Department is constantly updated to meet changing customer requirements.

equally important making us uniquely prepared to adapt with your changing needs.

Since 1974, John R. Bromiley Company has manufactured components and assemblies for some of the nation’s most respected manufacturers and industrial corporations—organizations where precision and profitability are center-stage on their list of core principles [a list that mirrors our own].

Modern manufacturers demand shorter lead times and smaller inventories which requires flexibility and strategic production planning. Each project has its own unique set of challenges—challenges we have

often encountered before. Our experience often results in cost-saving suggestions that optimize production while meeting all vital component criteria.

Working closely with engineers, industrial designers and OEMs, our CNC milling

and turning department can completely machine even your most complex workpieces precisely, cost-efficiently and fast. A dedicated quality assurance department ensures that your products are delivered to spec. on-time and on-budget. ■

Precision, Built-in

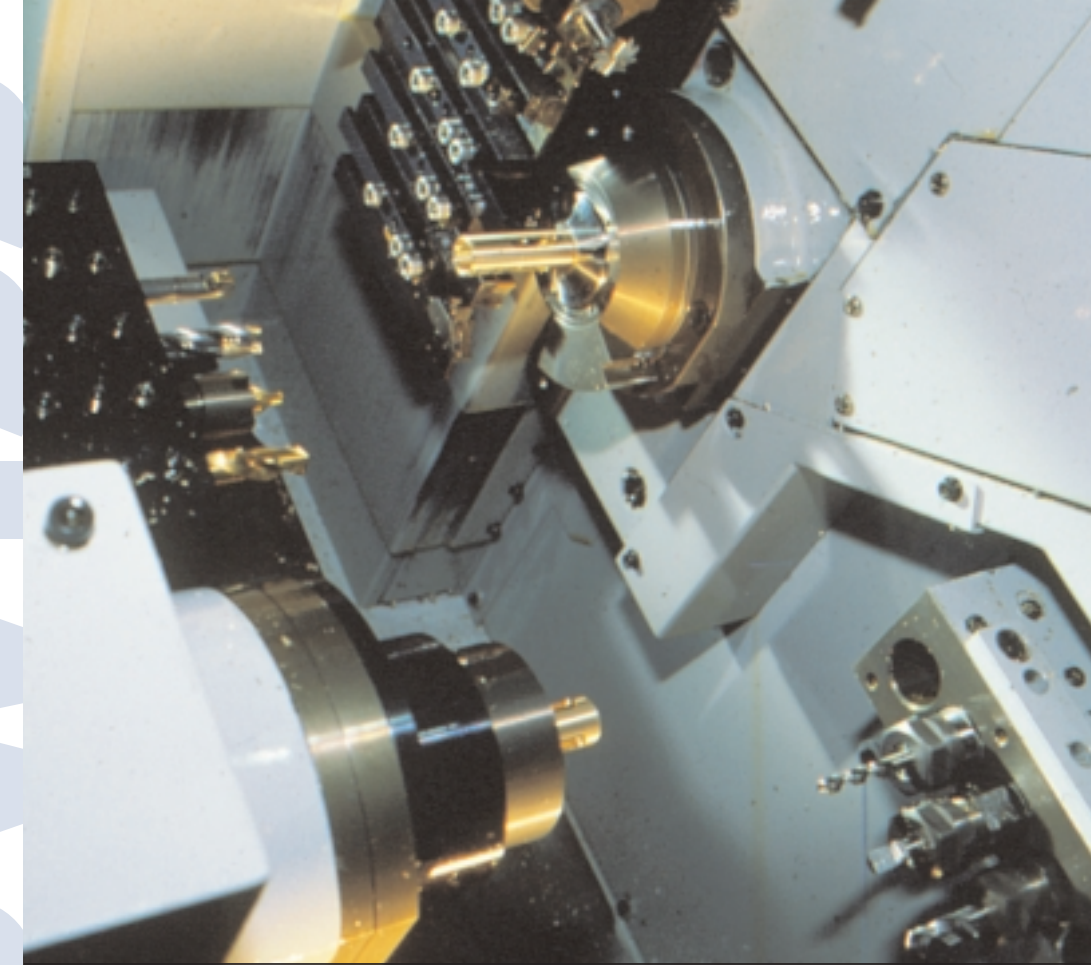
To ensure that quality never becomes a buzzword, all personnel belong to a value-driven team supervised by multiple shop foremen, on-floor inspectors and a dedicated quality assurance group which ensures your tolerances are on-target or exceeded.

By adhering to this program of ongoing in-process quality control from system programming through tooling setup and production, we can *expect* quality throughout our work rather than inspect for it at the end (*of course we inspect at the end too*).

The John R. Bromiley Company continually updates its Q.C. department to meet customer requirements and complies with MIL-I-45208. We also perform in-house calibration in accordance with MIL-STD-45662.



High precision swiss turned parts of even the smallest size are made with exacting precision everyday. Parts above are shown at actual size.



Swiss Turning





“Understanding advanced machine technology makes us credible and knowledgeable. Understanding your business requirements and market demands makes us valuable.”

“We emphasize this value by being prepared to adapt with your changing needs.”

Jason E. Bromiley
Production Control Manager
John R. Bromiley Co., Inc.

All jobs produced on CNC machining centers begin in our programming department. Our Smart-CAM programming center is hardwired to our CNC machinery. This means that all component parameters are sent directly to the machine center so operators aren't required to key programs in manually. During the programming stage, we examine each part's process to eliminate



Our programming department is completely hardwired to our CNC machining centers guaranteeing that programs are accurately transferred to destination machines. Changes in design can also be immediately transferred.

obstacles while certifying trouble-free, cost-effective production and assembly.

From the time an order is placed, you can count on the John R. Bromiley Company to fabricate your parts with the highest precision. ■

Production Capacity Multi-axis CNC Milling & CNC Turning

Speed + versatility + accuracy = maximum operating economy. State-of-the-art multi-axis mill•turn machining centers and Swiss-style turning centers anchor our modern, air-conditioned, 23,000 square foot facility.

These simultaneous multi-axis machining centers deliver the tolerances, surface finishes and complex geometries to meet or exceed your most advanced designed components. The range of axes and tooling sets often reduces jobs to one procedure.

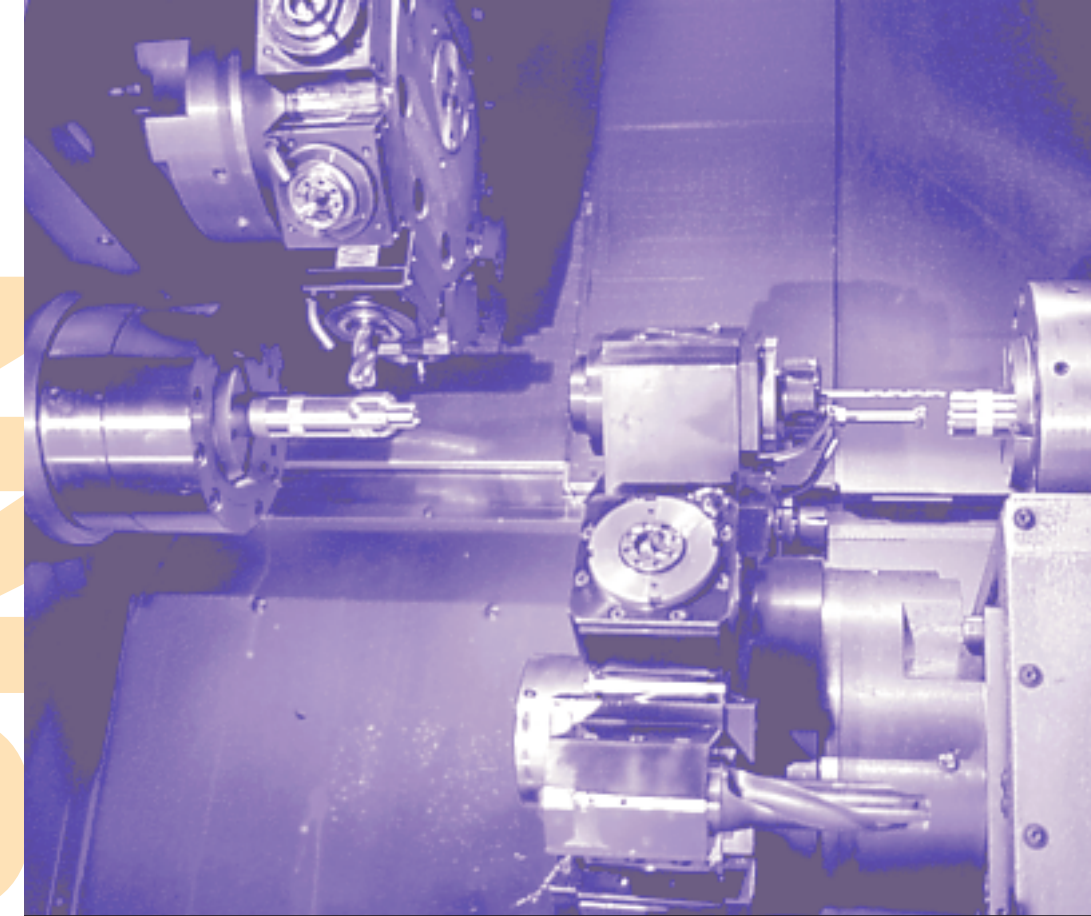
From .030" to 15" part diameters our two-shift labor force of skilled machinists,

system programmers and technicians are prepared to fulfill your most demanding needs.

For intricate geometries, versatile mill•turn centers with up to 7 axes, dual spindles and live tooling deliver unmatched precision and maximum production output. From an efficiency standpoint, these advanced CNC milling and turning systems reduce idle times, increase productivity and minimize part variability which all goes straight to the bottomline.

From simple turned parts to highly complex mill-turn components, we can handle virtually every conceivable customer requirement.

If your parts demand the most from a machine shop, we have a solution for you. ■



CNC Milling • Turning



Your Precision Partner



“If you can imagine it, we can probably manufacture it. Our multi-axis machining centers are capable of making almost any conceivable part.”

“Our diverse experience in nearly every industrial category makes us uniquely suited to solve most machining problems.”

Daniel T. Howell
General Manager
John R. Bromiley Co., Inc.

Total Machining Solutions

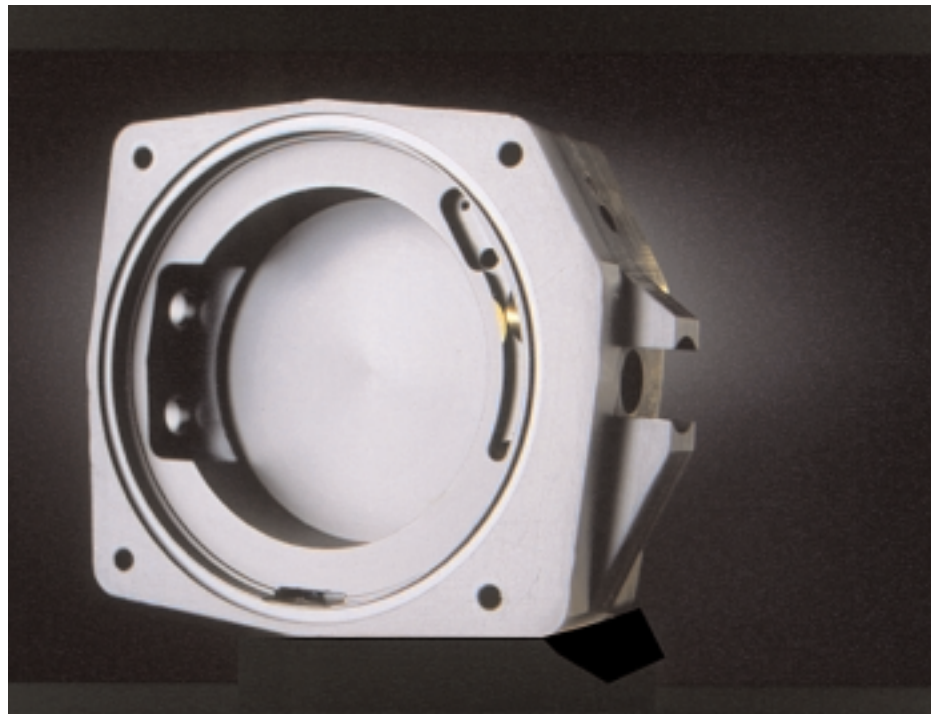
Our business is to be your complete machining resource. From bar stock or raw casting, to final surface finishing, we deliver total machining solutions.

Most components require more than just raw manufacturing. Operating environments may dictate that heat treating, plating, anodizing or chemical treatments are vital to long-term reliability. Other components may require assembly. Whatever your needs, you can have

confidence in John R. Bromiley Company and our reputation for delivering value.

Long-term relationships with subcontractors who share our commitment to service and quality ensures our ability to supply even the most exotic parts complete.

We have extensive experience machining all of the traditional metals as well as a wide variety of stainless steels, high temperature alloys, nickel alloys, titanium alloys and plastics. ■

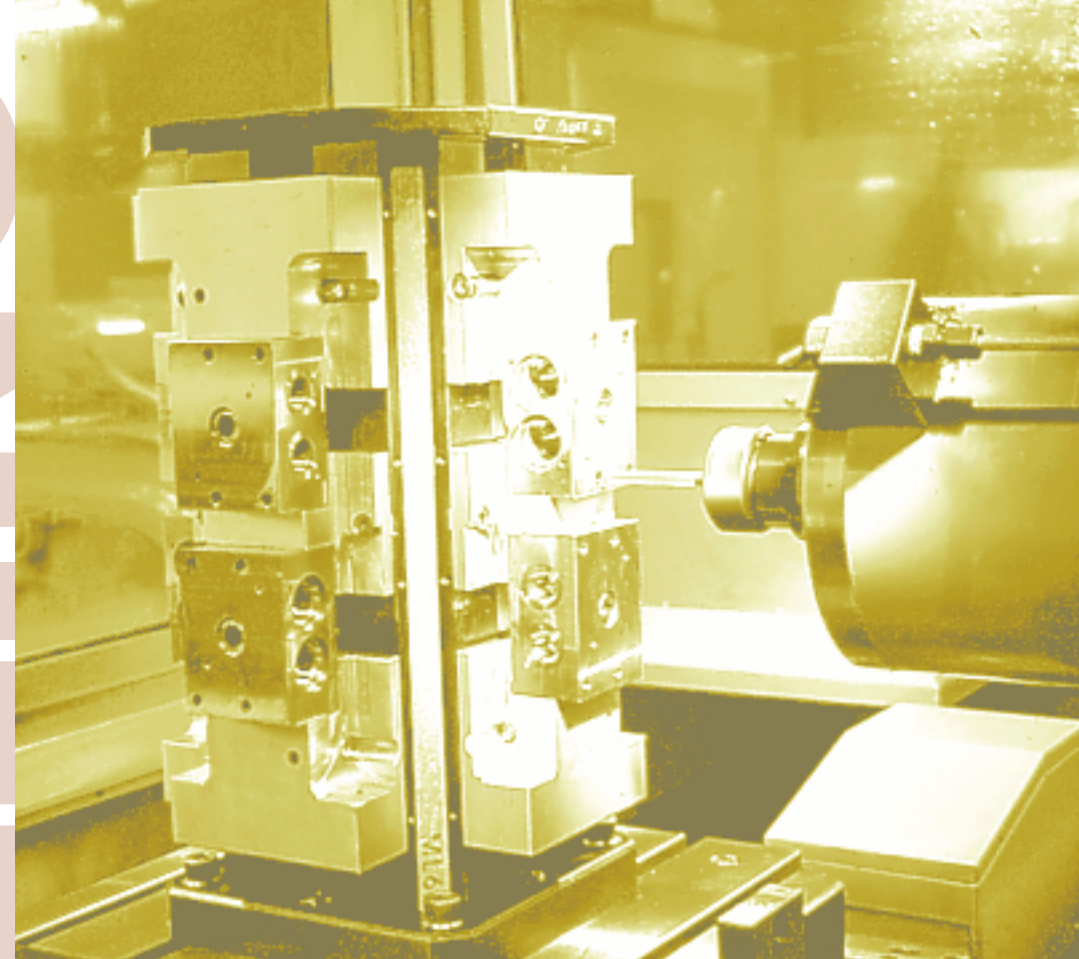


Our experience with so many diverse industries has given John R. Bromiley Co. a solid track record working with a wide range of materials. The above part was machined from solid Delrin™.

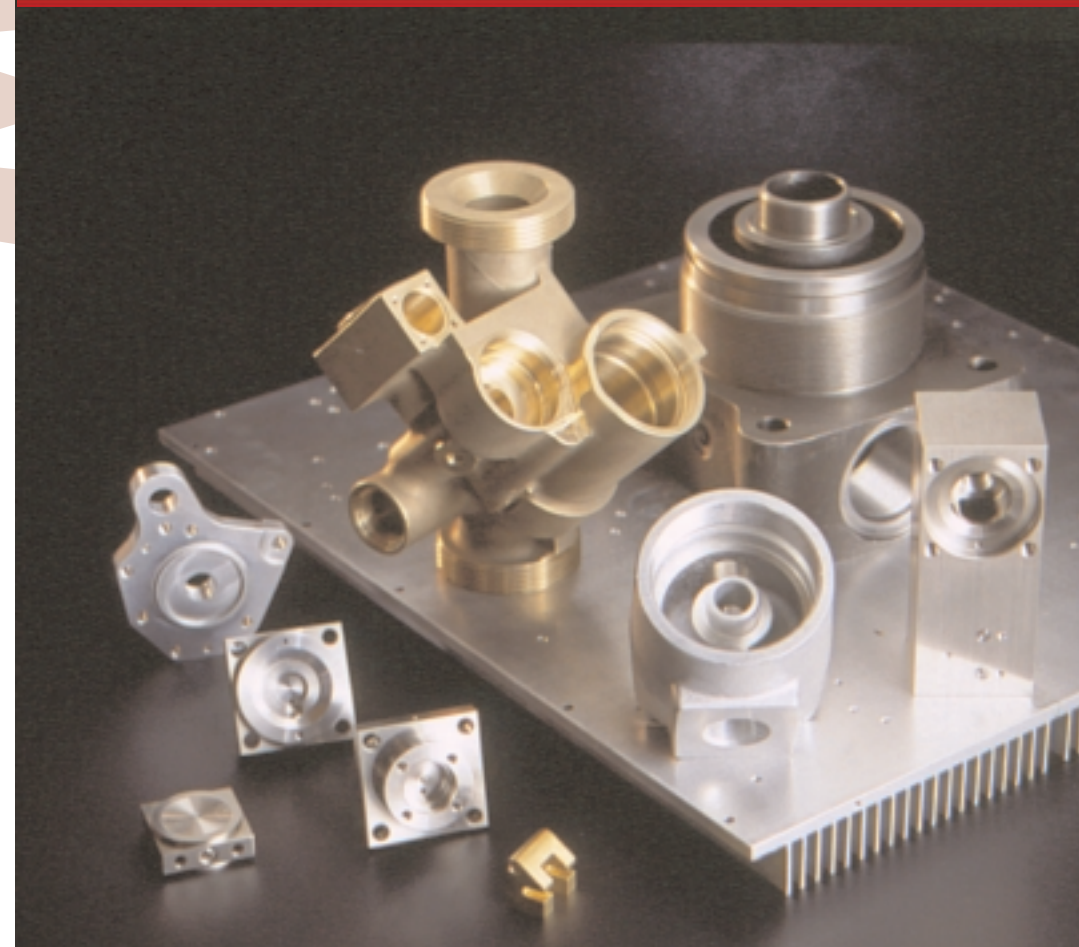
Is there a better way to manufacture your next part?

If there is, we'll find it. If you're looking for flexible, economic production of your components in production lots or small quantities, our advanced CNC machine centers and skilled operators can deliver the outstanding cost/performance your markets demand. The adaptability of our machines and our diverse view of the modern industrial arena ensures that as your needs change, we can quickly respond with a solution to fit.

Fulfilling your strategic needs was our goal in 1974, and it remains our goal today. With every job, we continue to build our reputation for reliability, accuracy and cost-efficiency—a reputation for delivering value. Next time you need a superior strategic solution to your machining needs contact the John R. Bromiley Machine Co. ■



Multi-Axis Milling





Milling & Turning

Call the John R. Bromiley Company at (215) 822-7723 to discuss your next project.

And find out why so many respected manufacturers and industrial corporations rely on us for their machining needs. The facilities list at right provides a summary of our equipment. For specific needs or requirements contact our shop. Someone will be happy to answer your questions and help you with technical details.

MILLING & TURNING

Facilities List

CNC Turning

- 1 Dainichi F-35 Chuck 15 inches (1994)
- 1 Hwacheon 2SP3 Twin Spindle, Twin Turret / Chucks 12 inches (1995)
- 1 Traub TNC-65 2-1/2 Bar Feed 7-axis, Twin Spindle, Twin Turret (1997)
- 1 Okuma LB 25 2-1/2 Bar Feed/Chuck 12 inches (1993)
- 1 Okuma LB 15 2-1/2 Bar Feed/Chuck 10 inches (1984)
- 1 Okuma LB 10M 4-Axis 1-5/8" Bar Feed/Chuck 8 inches (1986)
- 3 Hyundai - HiT 8S Chuck 6" (1995-1996)
- 1 Hyundai - HiT 8G Gangturn Chuck 6" (1996)
- 1 Miyano ATS 45S Multi-Axis 1-3/4" Bar Feed, Sub Spindle (1994)
- 2 Miyano BND - 42T2 Multi-Turret 1-5/8" Bar Feed (1995)
- 1 Miyano BNC - 34-C, 1-1/4" Bar Feed (1990)
- 1 Hardinge Conquest 2" Bar Feed (1995)
- 1 Hardinge Conquest Super Precision 1-5/8" Bar Feed (1990)
- 1 Hardinge Conquest 4-Axis 1-5/8 Bar Feed (1992)
- 1 Citizen L-32, 6-Axis Swiss Automatics 1-1/4" Capacity, Sub Spindle (1997)
- 1 Normura NN-20B11 5-Axis CNC Swiss Automatics 0.79" Capacity Sub Spindle (1996)
- 3 Citizen F-12 4-Axis CNC Swiss Automatics 1/2" Capacity (1985)

Auto-Turning

- 1 Brown & Sharpe #2 Ultramatics 1-5/8" Capacity (1985)
- 1 Brown & Sharpe #2 Ultramatics 1-1/4" Capacity (1984)
- 1 Brown & Sharpe #00 Ultramatic 1/2" Capacity (1978)

CNC Milling

- 1 Hyundai SPT-H500S 4-Axis Horizontal Machine Center with (2) 20" Pallets (1998)
- 1 OKK KCH-500 Horizontal Machine Center with (2) 20" Pallets (1993)
- 1 OKK PCV-55 Vertical Machining Center (1997)
- 1 OKK KCV-500 Vertical Machining Center (1995)
- 1 Matsuura MC - 600VF Vertical Machining Center (1996)
- 1 OKK VM-4 Vertical Machining Center (1996)
- 1 Miyano KSV-31 Vertical Machining Center (1991)

Milling

- 2 Bridgeport Vertical Mill "J" Head

Drill Press

- 3 3-Spindle 17 Inche Delta Table Drill Press
- 10 Single Spindle

Lathes

- 3 Hardinge DSM
- 1 Hardinge HC
- 1 17 inch Sigma Engine

Saws

- 1 Phoenix 13 inch Auto Horizontal Band Saw (1993)
- 1 Eisele Model VA OPV Cold Saw 2-inch Capacity
- 1 Powermatic Band Saw
- 1 Johnson Band Saw 12-inch
- 1 Doringer 12-inch Hand Cold Saw (1996)

Miscellaneous

- 1 Black Diamond Drill Grinder
- 1 6 inch & 4 inch Belt Sander
- 1 Telco Multi-spindle Drill Head
- 1 Sweco Vibratory Finish
- 2 Pedestal Tool Grinder
- 2 Surface Grinder (Brown & Sharpe 618) (Bayer Shultz 612)
- 1 Lepel Induction Heater
- 1 Sunnen Hone
- 15 Pedestal Buffers
- 1 Brown & Sharpe Micromaster Surface 12-24
- 1 Mitsubishi 5000lb Ride-on Forklift
- 1 Crown 3000lb walk-behind
- 1 5-Ton Bridge Crane
- 1 Raco 2-ton Mechanical Press

Inspection Equipment

- 1 Zeiss/Numerex CMM 28x28x18 (.00001 Resolution)
- 1 Scheer-Tumico 30 Inch x 10x50 Power Optical Comparator
- 1 Pratt & Whitney 24" Measuring Machine (.00001 Res.)
- 2 Taylor-Hobson/Surtronic 3 Profylometer
- 1 Sylvac Electronic Measuring System (.00001 Res.)
- 1 Wilson Rockwell Tester
- 1 Johnson Thread Gaging System
I.D. .1900" - 2.000"
O.D. .1900" - 0.075"
- 1 Freeland Air Gaging System
Various Thread Gages, Plugs and Rings



Phone: (215) 822-7723

Fax: (215) 822-8907

Resource.